

18 Kg of dough

PE 20

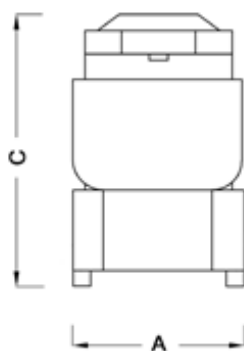
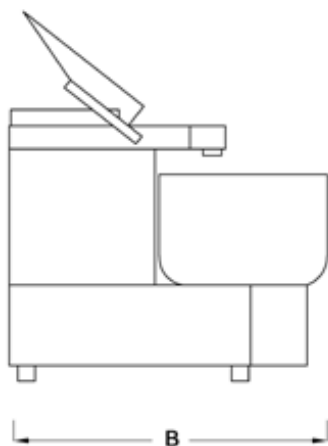


2 speeds

Stainless steel spiral tool
Drawn stainless steel bowl
Chain driven motor

Plastic cover
Raised legs
Emergency stop button

* Other voltage, please consult us.



Dimensions	
A mm	380
B mm	710
C mm	820
D mm	835
Weight	
Kg	84
Capacities	
Bowl	25 L
Pouring	5 L
Flour	10 kg
Dough	18 kg
Spirale speed rd/mn	
1st speed	66
2nd speed	132
Bowl speed tr/mn	
1st speed	7
2nd speed	14
Power	
CV	0.75
Voltage	
.	TRI - 380V - 50 Hz